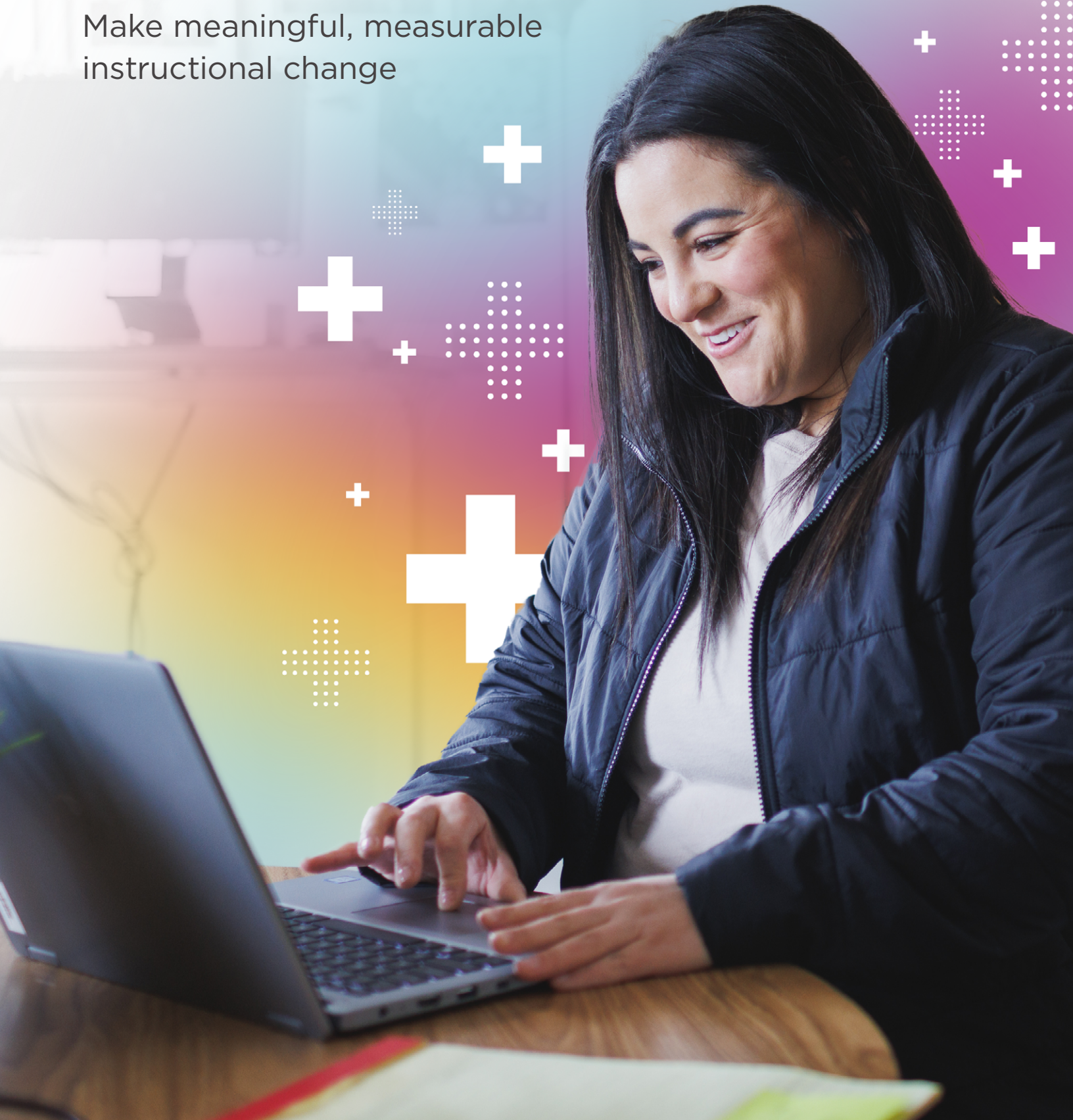


**nwea**

# Professional Learning

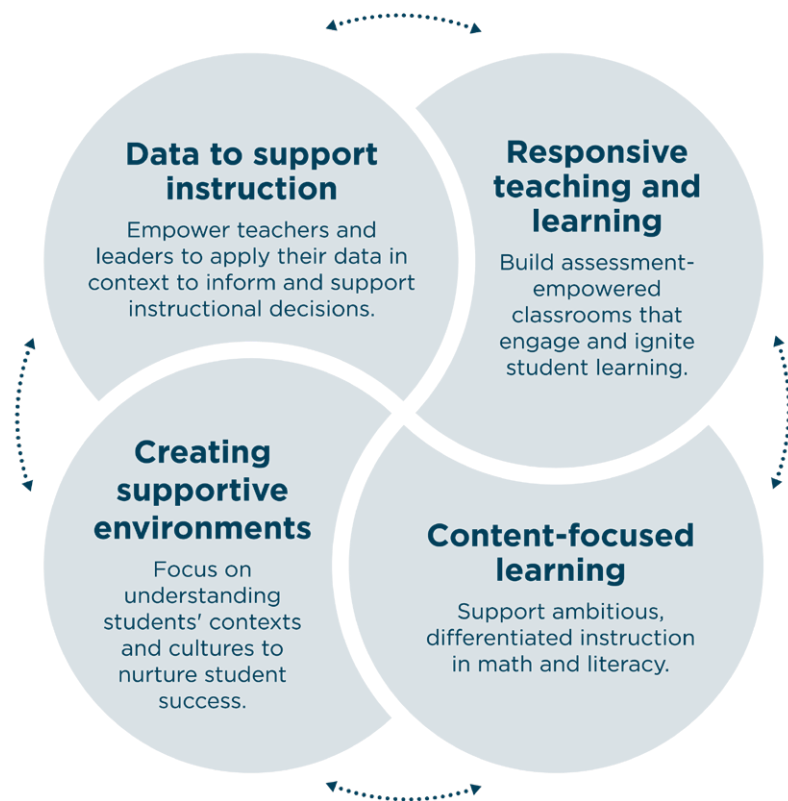
Make meaningful, measurable instructional change



# Professional learning that drives instructional change

Teachers demand and deserve the opportunity to grow, learn, and develop as professionals. NWEA® Professional Learning engages teachers in collaborative conversations that foster the high-quality, ambitious instruction that improves student outcomes.

We develop professional practice in four critical, interconnected categories that help educators make the most instructional impact.



**The result?** More confident classroom decisions every day and meaningful change in instructional practice.

## Proven, measurable results

Our partners find our learning valuable because it is highly engaging, and it delivers the knowledge and skills participants need to make immediate changes to their instructional practices. Our post-workshop survey results speak for themselves:

92.8%

of participants report having had a positive overall experience

92.9%

of participants felt that their session elicited and encouraged active engagement

92.6%

of participants thought that their learning was very well-facilitated

93.0%

of participants agreed that the learning could be immediately applied to their practice



# Data to Support Instruction series

Use NWEA assessments to plan instruction, guide differentiation, and help students take ownership of their learning

## MAP Growth offerings:

### MAP Growth basics

Gain a solid understanding of what makes MAP® Growth™ unique, how to administer the assessments, and the importance of engaging students and leveraging data to inform instruction.

### Applying reports

Learn to access, interpret, and apply data from MAP Growth reports and how to use the data to inform ongoing work, with a particular focus on goal setting with students.

### Informing instruction

Support effective instruction and meet the needs of every student through responsive instruction using MAP Growth results.

### Focusing on growth

Learn how to apply MAP Growth data in goal-setting and data conversations to improve student learning.

## MAP Reading Fluency offerings:

### MAP Reading Fluency basics

Get started with MAP Reading Fluency™ by discovering what MAP Reading Fluency can do and how to use it efficiently in the classroom.

### Essential reports

Learn to access, interpret, apply, and share rich data from MAP Reading Fluency reports.

### Informing instruction

Learn how MAP Reading Fluency data can inform instruction for all learners and how to align instructional practice with early reading development to differentiate effectively.

## MAP Accelerator offerings:

### MAP Accelerator basics

Discover the value MAP Accelerator™ brings to teachers and students and understand how to implement it in the classroom.

### Using results in the classroom

Respond to student needs and learn practical strategies for using MAP Accelerator in the classroom after administering MAP Growth.

### Setting goals with students

Explore how MAP Accelerator can help with student goal setting and guide instructional practices that sustain growth through the year.

## Delivery options tailored to meet your unique needs and schedule

Data to Support Instruction offerings are comprised of scaffolded learning segments. Choose the best fit based on your audiences, readiness levels, and prior experiences with your MAP product.

### 3...2...1... Go!



Most Data to Support Instruction offerings are available in 3-hour, 2-hour, and 1-hour virtual formats.



Our in-person workshops are available in a 3-hour onsite format.

### Which duration is right for me?

#### 3-hour sessions provide:

- The most detailed look at topics and strategies
- Opportunities for discussion, collaboration, and reflection

Best for new users wanting deep foundational training plus hands-on practice with how to interpret student data and make effective instructional decisions.

#### 2-hour sessions provide:

- Foundational learning
- Opportunities to use new learning with personalized practice
- Flexible scheduling for after school or part of a learning day

Best for teams with both new and existing users looking for foundational training and best practices in interpreting and comparing data.

#### 1-hour sessions provide:

- A high-level overview
- Opportunities to brief larger groups in a shorter amount of time
- Flexible scheduling for before or after school meetings

Best for teams with limited availability and/or looking for an overview or refresher on the main tools and reports.



# Responsive Teaching and Learning series

**Build responsive teaching and learning skills to engage and empower every learner**

Because not all educators enter the profession equipped with responsive teaching and learning skills, the process of building capacity in these skills can feel overwhelming. This series features a planned, ongoing process that teaches educators to develop the mindset, systems, and practices that empower the student as the center of the learning and are key to changing student outcomes and using assessments as part of a strategy to achieve growth.

---

## Assessment empowered classrooms offerings

These sessions help educators understand the elements of a balanced assessment system, build skills in communicating the results of assessments, triangulate data to inform decisions, and reframe assessment as opportunities for students to take greater ownership of their learning.

### **Student-centered assessment literacy**

Consider how to build a culture of learning to increase engagement and activate student ownership.

### **Balanced assessment systems for leaders**

Deepen knowledge of the essential elements of a balanced assessment system that proactively informs instruction to maximize student growth toward grade-level proficiencies and beyond.

### **Applying classroom assessment standards**

Explore and practice applying standards that guide sound classroom assessment, issued by the Joint Committee on Standards for Educational Evaluation (JCSEE).

### **Triangulating data for instructional insights**

Explore the development of focused questions to help guide efforts when triangulating data to inform decisions.

### **Using achievement level descriptors to ensure classroom rigor**

Apply achievement level descriptors (ALDs) to construct instructional pathways that develop from student readiness to rigor in the standards.

---

## Responsive learning cycles offerings

These sessions focus on key practices that enable educators to use day-to-day learning to understand what students have learned, plan needed supports and scaffolds, and engage students in interpreting and acting on evidence of their learning.

### **Nurturing collaborative learning spaces**

Practice how to collaborate with students to foster a positive learning culture and climate marked by respect, rigor, and responsibility.

### **Building learning paths with students**

Discover strategies for translating large goals into relevant learning experiences for your students that give them voice and choice.

### **Activating learners with quality classroom assessments**

Learn how to adopt, adapt, or create assessment processes, practices, and tools that engage students and stimulate learning.

### **Integrating supports for success**

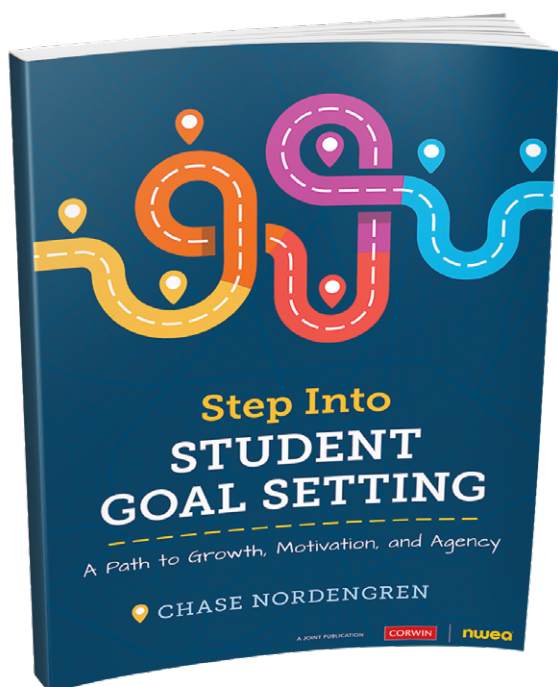
Explore how to collaborate with students to best apply supports—including accommodations, extensions, and scaffolds—to eliminate barriers to learning.

### **Engaging students in collecting learning evidence**

Learn how you can partner with students to elicit and gather goal-aligned learning evidence.

# Equip students to own their learning journeys

Based on the book *Step into Student Goal Setting: A Path to Growth, Motivation, and Agency*, a joint publication by Corwin® and NWEA, **Goal Setting to Empower (and Motivate) Students** shows teachers how to use goal setting with students as an integral instructional strategy to motivate, increase learning, express confidence, and achieve aspirations. Participant copies of the book are included with purchase of Part 1 in this three-part series.



## Part 1

- What do goals provide students?
- What are the characteristics of effective short-term learning goals?

## Part 2

- What are examples of goal conversations?
- What are components of effective feedback?
- How does goal setting fit into cycles of assessment?
- What are sources of meaning that fuel learners' motivation?

## Part 3

- What's at least one example of a goal-setting framework?
- How do goals help bridge learning and schooling?
- What are examples of goal autonomy, voice, choice, or reflection strategies?



My team's conversations shifted...to a focus on ...figuring out how to help teachers address the major gaps we were seeing. It was like a light bulb went off for the entire team at the same time."

**TAMMY TAYLOR**  
Principal  
Great Falls Elementary School, SC



# Content-Focused Learning series

**Develop the content area knowledge and pedagogical practices needed to master the fundamentals of literacy and math instruction**

Our content-focused professional learning is designed to enhance educators' content knowledge and strengthen their pedagogical practice. The literacy and math suites provide a deep understanding of content and research-based instructional practices, along with ways to apply that understanding to grade-level instructional needs and content standards.

## Key features

- Fosters ambitious and equitable instructional practices by building teachers' math and literacy expertise and pedagogical content knowledge.
- Provides methods and strategies that work with any curriculum—focuses on effective teaching and learning in math and literacy independent of any assessment or curriculum.
- Translates peer-reviewed research studies into efficient and explicit teaching and learning strategies to help all kids learn as mathematical thinkers, problem-solvers, fluent readers, and effective writers.
- Improves instructional decision-making with a focus on responsive teaching and learning by honing an effective formative assessment process.

## Responsive literacy practices offerings:

### **Grades K-2: Foundations—Guided by the shifts: Literacy**

Gain a deep understanding of today's college and career-ready standards, the key shifts in literacy, and the development of a classroom culture that supports discourse and builds a culturally responsive environment.

### **Grades K-2: Understanding how students learn to read, parts 1 and 2**

Learn how students learn to read, the multiple components that make up reading, and how to structure reading instruction to align to the science of reading research.

### **Grades K-2: Early word recognition, parts 1 and 2**

Implement effective literacy instruction through accessible classroom and evidence-based practices for a sounds-first approach.

### **Grades K-2: Building fluent readers, parts 1 and 2**

Discover strategies to help students increase fluency, advance their pedagogical content knowledge by analyzing reading fluency components, and examine the variables impacting reading fluency.

### **Grades K-8: Foundations of writing\***

Establish the groundwork for understanding how writing happens, what writers need to grow, and why writing is essential for every content area.

## Responsive math practices offerings:

### **Grades K-8: Foundations—Guided by the shifts: Math**

Gain a deep understanding of today's college and career-ready standards, the key shifts in math, and the development of a classroom culture that supports discourse and builds a culturally responsive environment.

### **Grades K-8: Utilizing the aspects of rigor in your Classroom eLearning module\***

In this ideal accompaniment to the Foundations workshop, you'll learn how to incorporate the most complex of the three college and career ready standards shifts, aspects of rigor, into instruction.

### **Grades K-8: Eliciting evidence of students' math understanding, parts 1 and 2**

Discover and practice strategies to cultivate questioning skills that increase the value of classroom discussions and enable making timely instructional adjustments based on student responses.

### **Grades 3-5: Developing deep conceptual understanding of fractions, parts 1 and 2**

Take a deep dive into the mathematical concepts underlying fractions to support student understanding of fraction ideas.

### **Grades 6-8: Cultivating integer fluency, parts 1 and 2\***

Learn to build student fluency with integer operations by cultivating habits of thinking about integer concepts and considering the underlying concepts that ground student fluency with integer operations.

\*Available Summer 2023



# Creating Supportive Environments series

## Support equitable growth for all students

This suite focuses on equity as it relates to access to content for students and teachers and high-quality instruction. It makes equitable teaching practices tangible and highly actionable on a daily basis by heightening awareness of the various equity tie-ins to instruction and identifying data practices and instructional moves that allow for greater equity and improved student outcomes. Sessions center on the following practices of an equitable and excellent education:

- Using an asset-based mindset
- Holding high expectations of students
- Offering rigorous instruction for all
- Creating a welcoming, inclusive, and affirming environment
- Building relationships with the community

---

### Equity empowered learning offerings:

#### **Leveraging data for equity**

Examine how data can lead to more equitable classroom practices and how students' identities and unique needs can impact their learning.

#### **Equity-focused data frames**

Explore how dispositions, beliefs, and identities can impact teaching and learning and how trustworthy data and assessment can empower learners.

#### **Equitable educational practices**

Learn how the intersection of equity and formative assessment practices shapes student engagement and success.

#### **Equity foundations\***

Based on the book *The Equity Expression*, a joint publication of Corwin and NWEA, authored by Fenesha Hubbard, participants will explore ways that inequities have impacted the current educational system and learn how to make equity actionable. Participant copies of *The Equity Expression* are included with this offering.

#### **Exploring mindsets and authentic relationships\***

Explore cultivating equitable mindsets and the importance of building authentic relationships to support equity.

#### **Equity in action: Processes\***

Learn how to enact equity through teaching and learning processes while letting day-to-day classroom practices guide your steps.

\*Available Summer 2023

# Power up your professional learning with these additional services

Want to deepen professional learning with additional time and space for application and practice?



## Instructional coaching for teachers

Continue the learning from any of our offerings by adding collaborative coaching. A highly qualified thought partner and practitioner will lead teachers through an inquiry-based coaching cycle to deliver a highly responsive and contextualized experience that takes the learning from theory to practice, using evidence-based and research-driven methods to build teacher capacity, efficacy, and instructional skill.

**Coaching is offered in virtual, blended, or onsite formats and meets teachers wherever they are on their professional journey:**

- **New Beginnings:** A coach guides a new teacher through an inquiry cycle in order to identify important goals, collect data, and intentionally work to improve classroom instruction.
- **Moving to Mastery:** Coaches help more experienced teachers stretch their understanding of instruction, assessment, and student engagement using data and evidence to enhance effective teaching practices.
- **Instructional Excellence:** With personalized, goal-oriented coaching, master teachers are motivated to lead and learn.

Want to measure the impact of professional learning on teaching effectiveness and student learning?



## Learning and evaluation services

This set of tailored tools and services measures the impact of professional learning on participants, school systems, and students. Beginning with a comprehensive needs assessment, our evaluation services are fully integrated with the planning and delivery of your professional learning to ensure the unique learning needs of your district are being met.

- **Needs assessment:** Gathers direct information on the assets and needs of your educators through interviews and observations.
- **Perceptions and practices survey:** A short, empirically validated measure of the knowledge, skills, attitudes, and beliefs shaped by participating in professional learning.
- **Classroom assessment use walkthrough:** Monitors assessment literacy through concrete changes in key teaching practices.
- **Student experiences portfolio:** Captures and summarizes the whole of how students interact with formative, interim, and summative assessment.





“

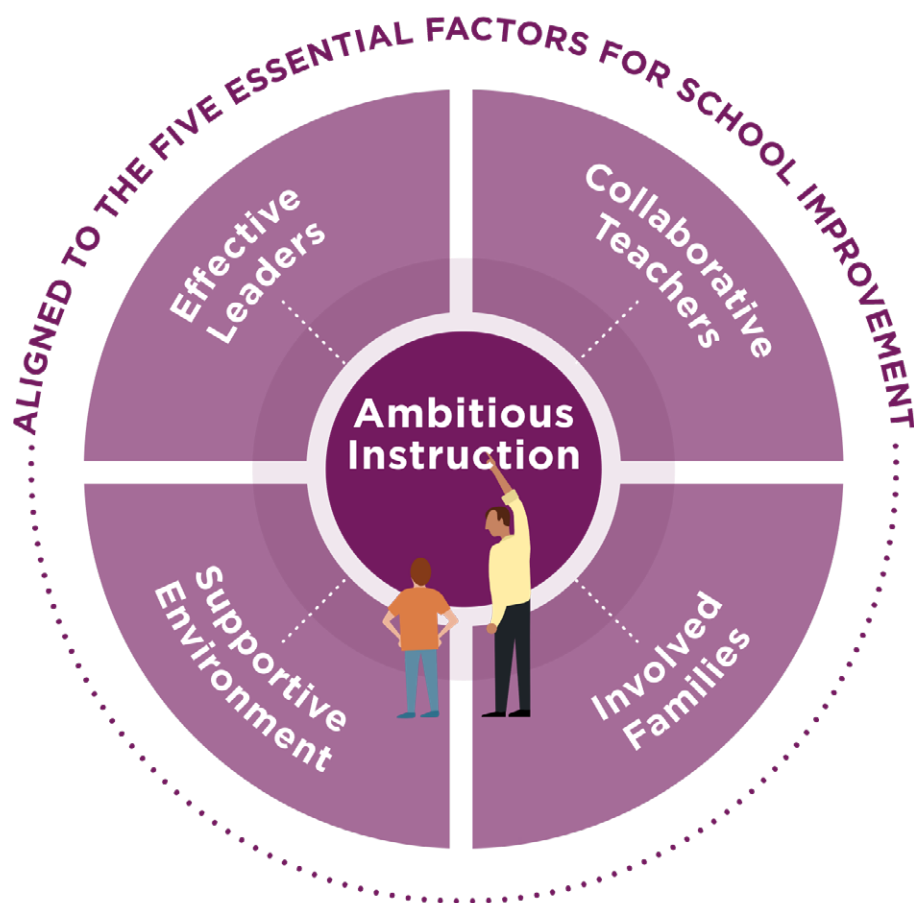
Without professional learning, MAP scores are just numbers on a graph. But when teachers really understand what those numbers mean, when they can put them into practice to inform their small groups and their decisions on where a child needs to go next, then the potential of MAP becomes a lot more clear.”

**BARBARA SMITH**

Director of School Improvement and Professional Learning  
Floyd County Schools, GA

# Create the culture and conditions for learning and growth to flourish

Grounded in the nationally renowned 5Essentials® Framework from UChicago Impact®, NWEA School Improvement focuses on building the competencies school leaders need to facilitate and sustain holistic, meaningful change. Beginning with an in-depth needs assessment, we work side by side with school leaders, equipping them with the skills they need to lead with confidence, compassion, and impact—ultimately driving better school performance.



The 5Essentials wordmark is a registered trademark owned by The University of Chicago.

**Research shows schools that are strong in at least three of the five essentials are 10 times more likely to show substantial gains in student learning.**



## NWEA School Improvement services include:



### 5Essentials Survey

The diagnostic survey from UChicago Impact® provides actionable data and insights into what is going well and what can be improved across the five essential factors for school improvement: effective leaders, collaborative teachers, involved families, supportive environment, and ambitious instruction.



### Needs assessment

A customized series of interviews, observations of professional collaboration, and surveys that gather information to begin improvement planning.



### 5Essentials professional learning

Educates leaders on the 5Essentials Framework and Survey and how to use survey results to improve schools.



### District systems advising

Partner with district leaders to develop systems, processes, protocols, and practices for improved student outcomes.



### Leadership coaching

Shoulder-to-shoulder support for principals to deepen leadership skills.



### School improvement professional learning

Build educator knowledge and skills specifically related areas of the 5Essentials Framework.

Learn more at  
[NWEA.org/school-improvement](https://nwea.org/school-improvement)



# Make meaningful instructional change

Discover more at [NWEA.org/professional-learning](https://www.nwea.org/professional-learning)  
or by contacting us at 866.654.3246.

## **nwea**

NWEA is a mission-driven organization that supports students and educators worldwide by providing assessment solutions, insightful reports, professional learning offerings, and research services. Visit [NWEA.org](https://www.nwea.org) to find out how NWEA can partner with you to help all kids learn.

© 2023 NWEA. NWEA and MAP are registered trademarks, and MAP Growth, MAP Reading Fluency, and MAP Accelerator are trademarks, of NWEA in the US and in other countries. Illustration on page 7 © Adam Simpson and Heart 2017.

The 5Essentials is a registered trademark owned by The University of Chicago. © 2021 University of Chicago.

The names of other companies and their products mentioned are the trademarked of their respective owners.

MAR23 | WELTSK5638 | MAPXX\_MKTG10176